

# Sustainability Statement



**Improving healthcare for all.**

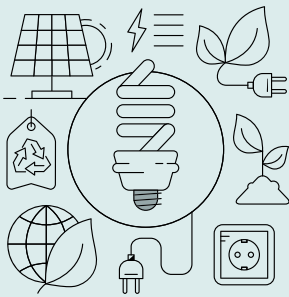
**At Irish Hospital  
Supplies, we always  
endeavor to champion  
the benefits of  
sustainability practices  
within the organisation  
and in each and every  
supplier and customer  
engagement.**

The following material topics are key considerations along with an outline of our approach to reducing and mitigating the impact of our operations.



# Travel & Transport

Considerations	IHS Approach
Emissions	Measure
Promoting use of public transport	Our employees are encouraged to utilise public transport when travelling to the office and client meetings to reduce carbon emissions.



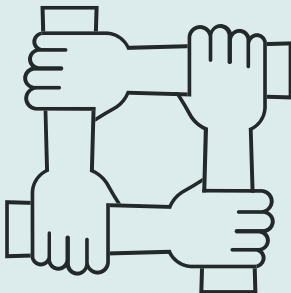
# Green Procurement

Considerations	IHS Approach
Supplier due diligence & evaluation	When evaluating potential suppliers (of equipment), IHS will ensure potential suppliers have a robust sustainability approach to gauge their alignment with the HSE's ambition in relation to climate action.



# Service Administration & eBilling

Considerations	IHS Approach
Printing and paper usage	To minimise the impact of the service administration activities, where possible, communications and billing activities are managed electronically.
Printing with reduced environmental impact	We aim to deliver a paperless/paper-lite service.



# Equality, Diversity & Inclusion

Considerations	IHS Approach
Equality of Access	ED&I is an inherent part of our organisation. We have an ED&I policy in place which is part of new staff induction packs and training material.

It is undeniable that climate change is happening and creating dire consequences for the planet. The risks associated with climate change have direct and indirect impacts on the environment, human populations, society and global security. To help mitigate against this risk from an Irish perspective and play a role in reducing national carbon emissions, the Irish government released the National Climate Action Plan. This report sets out a roadmap to guide the country to a more sustainable future and to make an attempt to tackle global warming.

One main goal is to halve greenhouse gas emissions by 2030 and to reach zero emissions by 2050. The Climate Action Plan not only aims to play a role in protecting the planet but simultaneously creating economic opportunities. A greener economy and society is one in which benefits all and will secure a future for generations to come.



## Commitment

Meet our environmental commitment targets, and the requirements of governmental environment and energy regulations;



## Continuous Improvement

Continually review and improve the environmental and energy performance of our office facilities;



## Review

Review aspects, prioritise and establish energy and environmental goals and objectives on an annual basis;



## Employee Involvement

Encourage the involvement of employees to promote and ensure an environmentally friendly and energy efficient workplace;



## WEEE Compliant

Audit practices and programmes to help ensure continuous improvement.

